

BRILLIANT EARTH[®]

First Quarter 2024 Financial Results

May 9, 2024





Forward-Looking Statements

This Presentation and statements to be made on the earnings conference call (collectively, the "Presentation"), contain forward-looking statements. We intend such forward-looking statements to be covered by the safe harbor provisions for forward-looking statements contained in Section 27A of the Securities Act of 1933, as amended (the "Securities Act"), and Section 21E of the Securities Exchange Act of 1934, as amended (the "Exchange Act"). All statements other than statements of historical facts contained in this Presentation may be forward-looking statements. Statements regarding our future results of operations and financial position, including expected net sales for the second quarter of 2024 and expectations regarding net sales and Adjusted EBITDA for the full year 2024, business strategy, plans and objectives of management for future operations, including, among others, statements regarding expected growth and increased market share, introduction of new products, future capital expenditures, and debt service obligations, are forward-looking statements. In some cases, you can identify forward-looking statements by terms, such as "anticipate," "believe," "contemplate," "continue," "could," "estimate," "evolve," "expect," "intend," "may," "plan," "potential," "predict," "seek," "should," "strategy," "target," "will," or "would," or the negative of these terms or other similar expressions. Accordingly, we caution you that any such forward-looking statements are not guarantees of future performance and are subject to risks, assumptions, and uncertainties that are difficult to predict. You should not rely upon forward-looking statements as predictions of future events. We have based these forward-looking statements largely on our current expectations and projections about future events and trends that we believe may affect our financial condition, results of operations, business strategy, short term and long-term business operations and objectives, and financial needs. Although we believe that the expectations reflected in these forward-looking statements are reasonable as of the date made, actual results may prove to be materially different from the results expressed or implied by the forward-looking statements. These forward-looking statements are subject to a number of risks, uncertainties, and assumptions, including, but not limited to: fluctuations in the pricing and supply of diamonds, other gemstones, and precious metals, particularly responsibly sourced natural and lab-grown diamonds and recycled precious metals such as gold; an overall decline in the health of the economy and other factors impacting consumer spending, such as recessionary or inflationary conditions, governmental instability, war and fears of war, and natural disasters; our ability to cost-effectively turn existing customers into repeat customers or acquire new customers; our rapid growth in recent years and limited operating experience at our current scale of operations; our ability to manage growth effectively; increased lead times, supply shortages, and supply changes; our expansion plans in the United States; our ability to compete in the fine jewelry retail industry; our ability to maintain and enhance our brand and to engage or expand our base of customers; our ability to effectively develop and expand our sales and marketing capabilities and increase our customer base and achieve broader market acceptance of our e-commerce and omnichannel approach to shopping for fine jewelry; our profitability and cash flow being negatively affected if we are not successful in managing our inventory balances and inventory shrinkage; a decline in sales of Design Your Own rings; our ability to manage growth effectively; our heavy reliance on our information technology systems, as well as those of our third-party vendors and service providers, for our business to effectively operate and to safeguard confidential information and risks related to any significant failure, inadequacy or interruption of these systems, security breaches or loss of data; the impact of environmental, social, and governance matters on our business and reputation; our ability to manage risks related to our e-commerce and omnichannel business; our ability to effectively anticipate and respond to changes in consumer preferences and shopping patterns and introduce new products and programs that appeal to new or existing customers; our dependence on distributions from Brilliant Earth, LLC, our principal asset, to pay our taxes and expenses, including payments under the Tax Receivable Agreement; risks related to our obligations to make substantial cash payments under the Tax Receivable Agreement and risks related to our organizational structure; and the other risks, uncertainties and the factors described in the section titled "Risk Factors" in our Annual Report on Form 10-K for the year ended December 31, 2023, which filing is available at www.sec.gov. We qualify all of our forward-looking statements by these cautionary statements. These forward-looking statements speak only as of the date of this Presentation. Except as required by applicable law, we undertake no obligation to update or revise any forward-looking statements contained in this Presentation, whether as a result of any new information, future events or otherwise.

Disclosure Regarding Non-GAAP Financial Measures and Key Metrics

This Presentation contains certain financial measures not presented in accordance with US Generally Accepted Accounting Principles ("GAAP"). These non-GAAP financial measures provide users of our financial information with useful information in evaluating our operating performance and exclude certain items from net income that may vary substantially in frequency and magnitude from period to period. Please refer to the section of this presentation entitled "NonGAAP Metrics and Reconciliations" for a reconciliation of GAAP to non-GAAP financial information. This Presentation also contains certain key business metrics which are used to evaluate our business and growth trends, establish budgets, measure the effectiveness of our sales and marketing efforts, and assess operational efficiencies. We define total orders as the total number of customer orders delivered less total orders returned in a given period (excluding those repair, resize, and other orders which have no revenue). We view total orders as a key indicator of the velocity of our business and an indication of the desirability of our products to our customers. Total orders, together with AOV, is an indicator of the net sales we expect to recognize in a given period. Total orders may fluctuate based on the number of visitors to our website and showrooms, and our ability to convert these visitors to customers. We believe that total orders is a measure that is useful to investors and management in understanding our ongoing operations and in an analysis of ongoing operating trends. We define average order value, or AOV, as net sales in a given period divided by total orders in that period. We define average selling price, or ASP, as the total retail sales price of products sold in a given period divided by the total number of product units sold during that same period. We believe that AOV and ASP, are measures that are useful to investors and management in understanding our ongoing operations and in an analysis of ongoing operating trends. AOV and ASP may also fluctuate as we expand into and increase our presence in additional product types and price points, and open additional showrooms.

Industry and Market Data

We include in this Presentation statements regarding factors that have impacted our industry. Such statements are statements of belief and are based on industry data and forecasts that we have obtained from internal company surveys, publicly available information, industry publications and surveys and third-party studies. Industry publications, surveys and forecasts generally state that the information contained therein has been obtained from sources believed to be reliable, but there can be no assurance as to the accuracy or completeness of such information. Certain market, ranking and industry data included in the Presentation, including the size of certain markets and our size or position and the positions of our competitors within these markets, including our services relative to our competitors, are based on estimates of our management. These estimates have been derived from our management's knowledge and experience in the market in which we operate, as well as information obtained from internal company surveys, industry publications and surveys, third-party studies and other publicly available information related to the market in which we operate. Unless otherwise noted, all of our market share and market position information presented in this Presentation is an approximation based on management's knowledge. In addition, while we believe that the industry information included herein is generally reliable, such information is inherently imprecise. While we are not aware of any misstatements regarding the industry data presented herein, our estimates involve risks and uncertainties and are subject to change based on various factors.

Trademarks

This Presentation includes our trademarks and trade names which are protected under applicable intellectual property laws and are our property.



Table of Contents

Company Overview	4
Q1 2024 Results	7
2024 Priorities and Outlook	15
Appendix	19

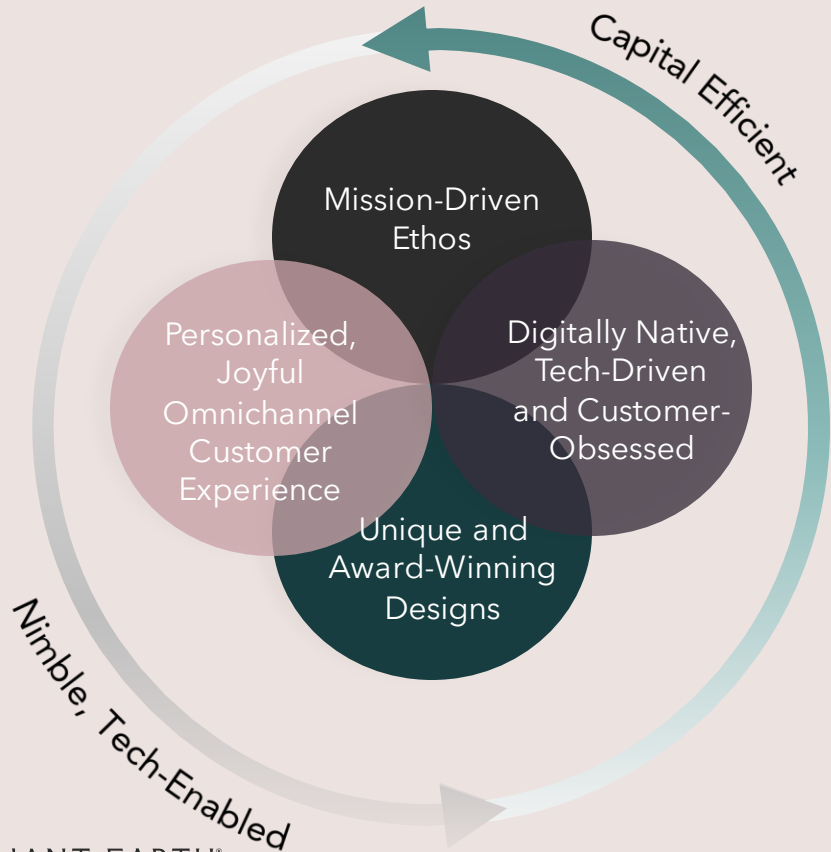


Company Overview





The Next Generation Fine Jeweler for Today's Consumer



BRILLIANT EARTH®



CONFIDENTIAL

Brilliant Earth is a global leader in fine jewelry. We are successfully executing our strategy to transform and modernize the jewelry industry.

Brilliant Earth's Competitive Advantages




1 VAST INDUSTRY THAT IS RIPE FOR DISRUPTION

2 AGILE BUSINESS MODEL THAT CAN SWIFTLY ADAPT

3 USING DATA TO INFORM DECISION-MAKING
ASSET LIGHT MODEL NOT BURDENED
BY HOLDING EXCESS INVENTORY

4 OMNICHANNEL MODEL PROVIDES A JOYFUL,
SEAMLESS SHOPPING EXPERIENCE

5 OUR VALUES STRONGLY RESONATE WITH
OUR CUSTOMERS

A close-up, profile view of a woman with dark hair, wearing a light-colored ribbed sweater. She is looking towards the left. Her right hand is raised to her hair, and she is wearing a ring with a large blue square gemstone on her ring finger. She also has two gold bangles on her right wrist and a gold hoop earring. The background is a soft-focus landscape with mountains under a bright sky.

Q1 2024 Results

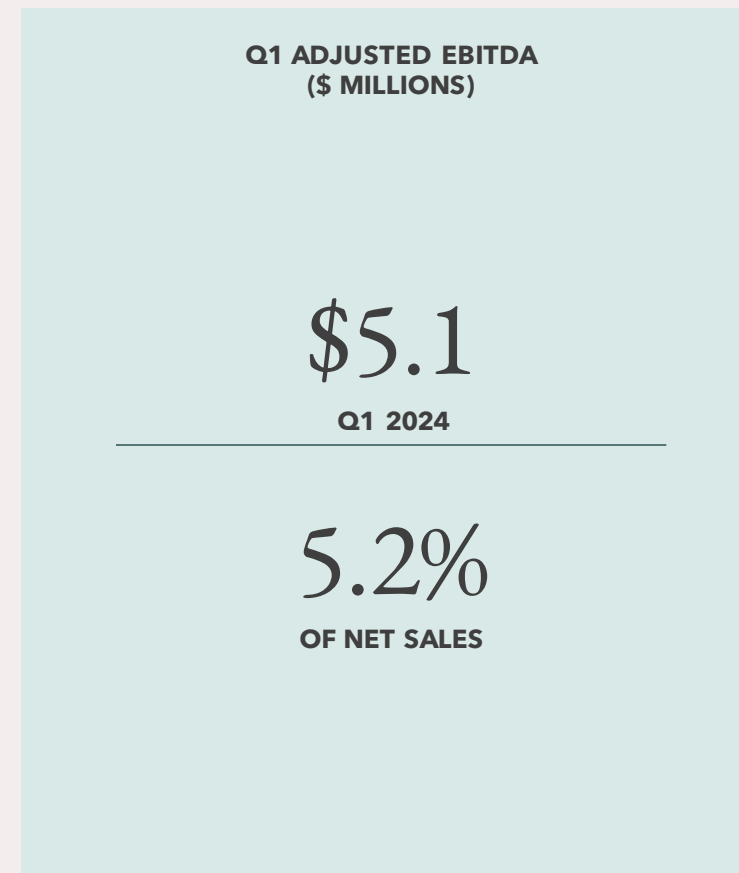
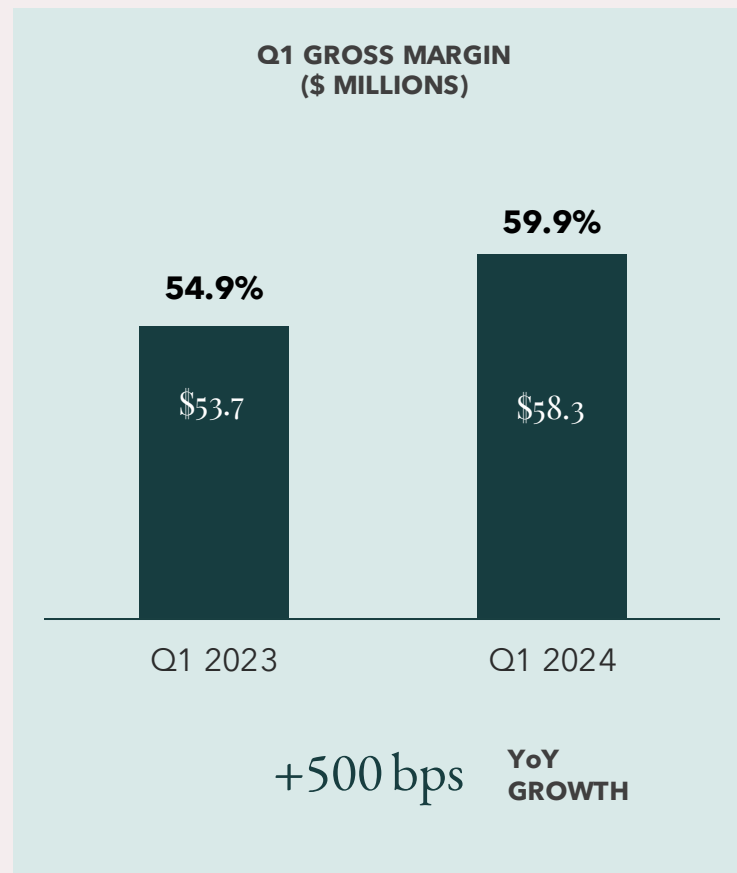
Q1 2024 Highlights and Key Achievements



- + **\$97.3M in net sales**, approximately flat year-over-year
- + **13.7% y/y total order growth** and over **20% y/y growth** in repeat orders
- + **Average Selling Price (ASP) up y/y across product lines** including engagement rings, wedding bands, and fine jewelry
- + **Gross margin of 59.9%** a 500-basis point expansion y/y
- + **Adjusted EBITDA of \$5.1M**, exceeding expectations
- + **11th consecutive quarter of positive Adjusted EBITDA** as a public company
- + **Inventory turns significantly higher than industry average**
- + **\$1.5M increase in cash balance y/y** even after capital investments and reduction of debt principal balance



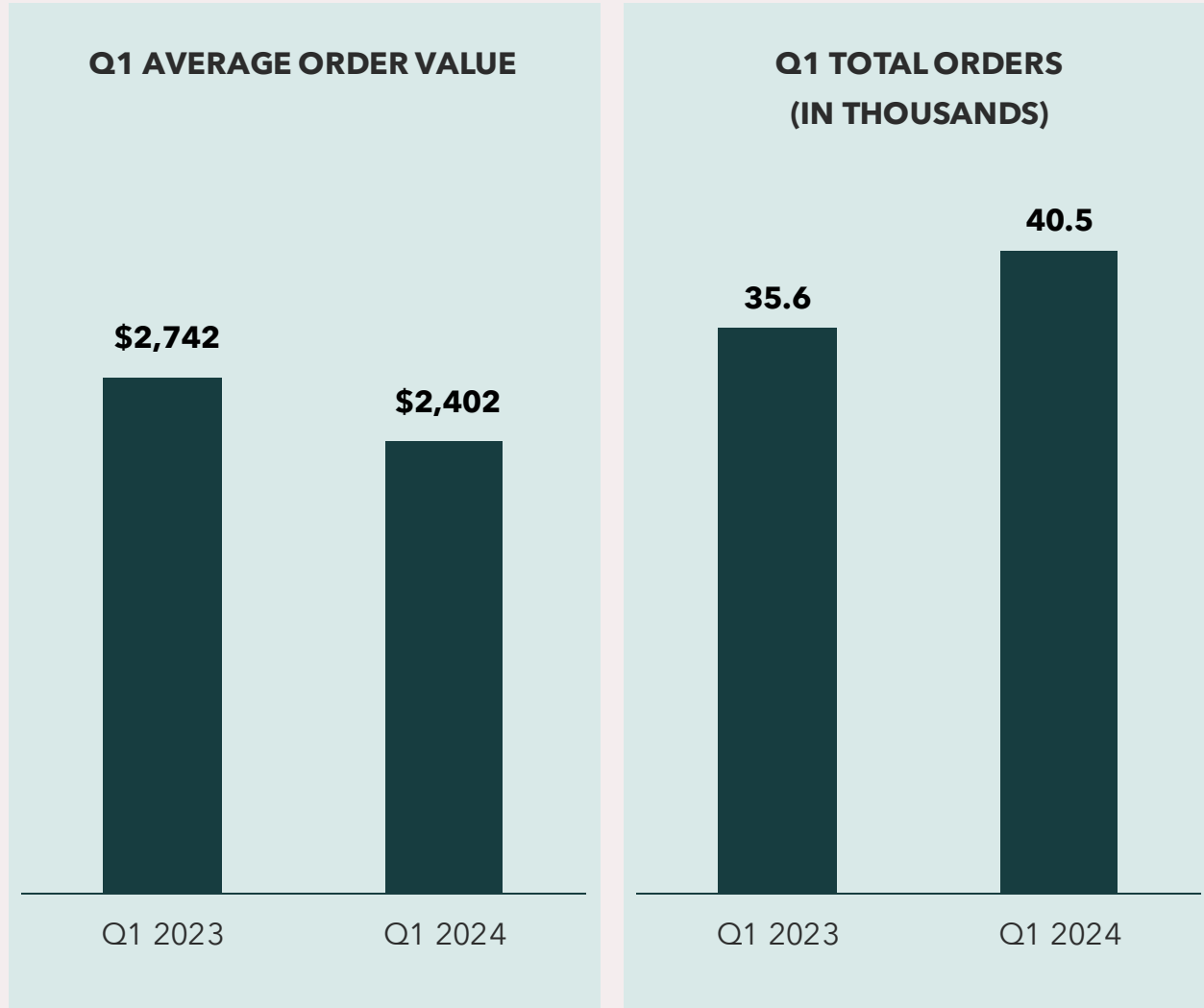
First Quarter 2024 Financial Summary



See Appendix for a reconciliation from Net Income and Net Income Margin to Adjusted EBITDA and Adjusted EBITDA Margin



First Quarter 2024 Financial Results



- ✦ Strong order growth demonstrates effectiveness in customer acquisition and retention, brand resonance and strong omnichannel performance across our products
- ✦ ASP for engagement rings, wedding bands and fine jewelry up y/y in Q1
- ✦ AOV moderation is expected as fine jewelry continues to become a larger part of the product mix



Continued Brand Success

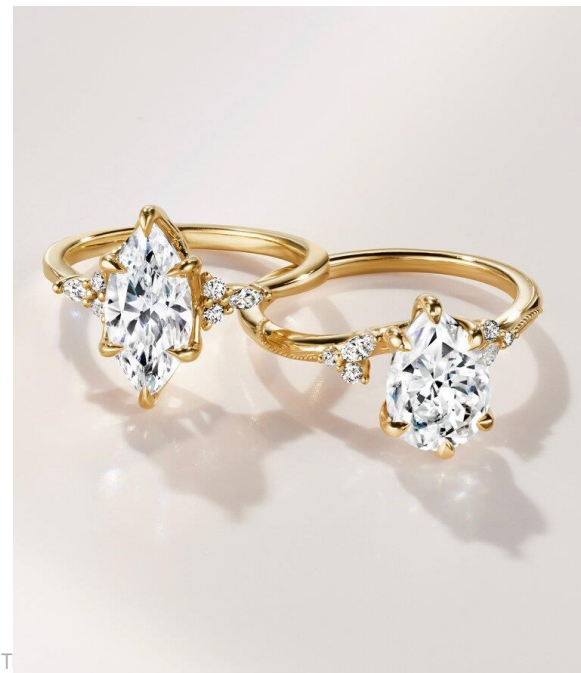
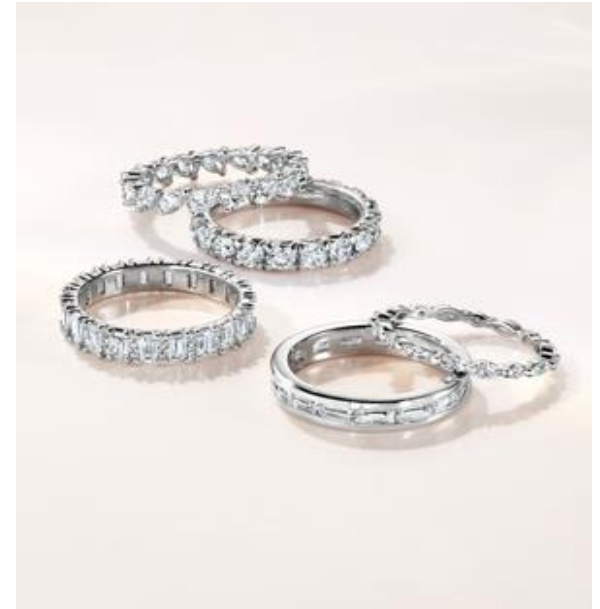
- ✦ Launched our partnership with legendary conservationist Dr. Jane Goodall in support of the Jane Goodall Institute
- ✦ Executed Valentine's Day 'Real Love' campaign featuring customer love stories resulting in over 50M media impressions
- ✦ Drove strongest quarter ever in social engagement, with 100% growth in social media engagement quarter-over-quarter
- ✦ Continued red-carpet success, including Sydney Sweeney at the 35th Annual GLAAD Media Awards





Beautifully Designed, Trend-Leading, Distinctive, Personalized Products

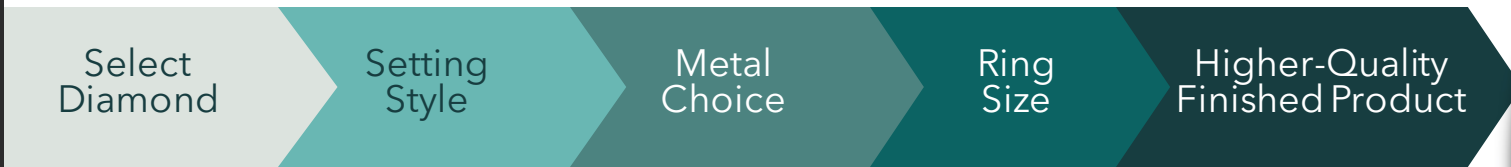
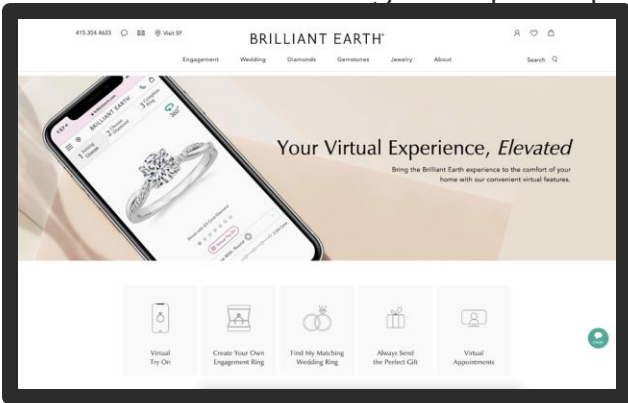
- + Strong fine jewelry performance with 45% y/y growth in the two weeks prior to Valentine's Day
- + Double-digit y/y growth in Q1 in wedding and anniversary rings
- + Leading diamond origin transparency with more than 10,000 blockchain-enabled diamonds





Business Model Drives Inventory Turns and Negative Working Capital¹

- + Design Your Own model and virtual inventory of hundreds of thousands of natural & lab-grown diamonds offers broad range of options for customers, while keeping balance sheet inventory low
- + Inventory turns significantly higher than industry average
- + Inventory ended less than 3% higher year over year even with growth of new showrooms and fine jewelry
- + Quarter end cash of \$147.5m was \$1.5m higher year over year even after expanding showroom footprint by over 30% y/y and reducing debt principal balance

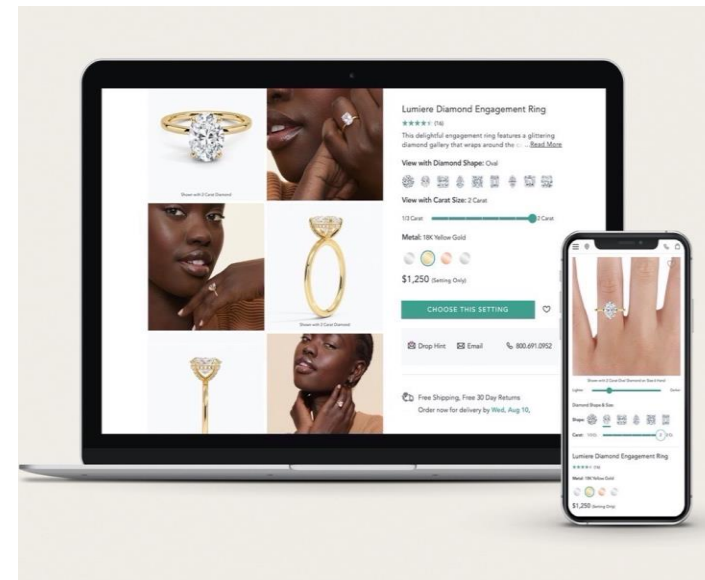


¹Defined as current assets less cash minus current liabilities



Power of Our Omnichannel Model

- ✦ Seamless consumer experiences across digitally native and showroom environments
- ✦ Showroom experience and formats that enhance customer engagement
- ✦ Industry-leading features that optimize consumers' experiences online
- ✦ Continue to see positive, incremental growth in metros with more than one showroom
- ✦ On track to open 3 new showrooms this year: two in Boston and our first street-level location in New York City



2024
Priorities
and Outlook



2024 Priorities

1 CONTINUE ON OUR PATH TO BECOME THE PREMIER GLOBAL JEWELRY BRAND FOR TODAY'S AND TOMORROW'S CONSUMER

2 EXPAND AND REFINE DISTINCTIVE, HIGH-QUALITY PRODUCT OFFERING

3 EXPAND AND ELEVATE OMNICHANNEL EXPERIENCE

4 INVEST TO DRIVE OPERATIONAL EFFICIENCY AND LONG-TERM SUSTAINABLE GROWTH





2024 Outlook



Second Quarter

Low to mid-single-digit % y/y decline

NET SALES

Low single-digit % Adjusted EBITDA margin

ADJUSTED EBITDA

Fiscal Year

\$455m–\$469m

NET SALES

\$14m–\$22m

ADJUSTED EBITDA

Medium-Term Targets

1 **NET SALES GROWTH RATE:** ACCELERATE TO LOW TEENS GROWTH RATE IN 2027

2 **GROSS MARGIN:** HIGH 50s % THROUGH 2027

3 **MARKETING % OF NET SALES:** BEGIN DECREASING IN 2025

4 **ADJUSTED EBITDA MARGIN:** INCREASE TO DOUBLE DIGIT MARGIN IN 2027



Appendix





GAAP to Non-GAAP Reconciliations

ADJUSTED EBITDA AND ADJUSTED EBITDA MARGIN

Three months ended
March 31,

(Unaudited and \$ in 000's)	2024	2023
Net income (loss), as reported	\$1,067	\$(440)
Interest expense	1,214	1,206
Income tax expense (benefit)	73	(13)
Depreciation expense	1,203	951
Amortization of cloud-based software implementation costs	205	124
Showroom pre-opening expense	213	1,772
Equity-based compensation expense	2,587	2,258
Other income, net ¹	(1,477)	(843)
Transaction costs & other expense ²	-	532
Adjusted EBITDA	\$5,085	\$5,547
Net income (loss) margin	1.1%	(0.5)%
Adjusted EBITDA margin	5.2%	5.7%

1. Other income, net consists primarily of interest and other miscellaneous income, partially offset by expenses such as losses on exchange rates on consumer payments.

2. These expenses are those that we did not incur in the normal course of business.



BRILLIANT
EARTH®